

# BODY II. energy speed

Fully adjustable fall-arrest harness with various attachment points, speed buckles and comfortable padding. Suitable for working situations with maximum freedom of movement during work positioning.

## DESCRIPTION

Removable and washable shoulder and leg loops padding provides great comfort.

Integrated loops on shoulder padding for hooks storage. Maximum load capacity 1.5 kg.

Webbing stitched in the buckles simplify handling.

Front attachment point for fall-arrest according to EN 361 marked with additional „A” marking.

Speed buckles enable fluent and fast adjustment to fit a user’s body.



Shoulder and leg loop padding with reflective straps provide higher visibility in dark conditions.

Rear attachment point according to EN 361 marked with „A” label.

Mesh net triangle for higher ventilation.

Stitched waist belt padding allows horizontal or vertical movement of the padding thus providing maximum comfort during a work.

Side attachment points for work positioning according to EN 358. 4 additional plastic hooks for light gear attachment.

Two gear loops with max. load 5 kg

## STANDARDS

CE 1019  
EN 361:02  
EN 358:99

## FEATURES



guarantee



made in  
Czech Republic

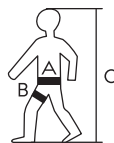


2 250 g S/M/L / 79.44 oz  
2 450 g L/XXL / 86.49 oz

## MATERIALS

40 % PES                    5 % polyethylene  
27 % Eva foam            3 % synthetic rubber  
10 % PAD  
9 % steel  
6 % light alloy

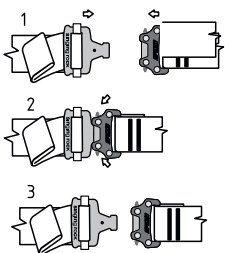
## SIZE CHART



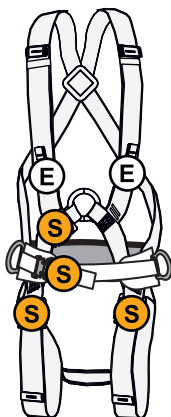
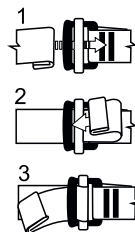
	S/M/L	XL/XXL
m [g]	2 250 g	2 450 g
A [cm]	75–130	85–145
B [cm]	55–75	65–100
C [cm]	150–185	180–210
C [ft]	4,9–6	5,9–6,8

## TECHNICAL DATA

### S Speed buckle



### E Easy – lock buckle



## SINGING ROCK

### TRACEABILITY LABEL / ETIKETA SLEDOVATELNOSTI

1	2	3	1	2
4	001/9999/04/18	XXXXXX	EN unique No.	batch No.
5	SIZE: XX		CZ jedinečné číslo	výrobní číslo
			DE Eindeutige nummern	Chargennummer
			FR Numéro unique	Numero de lot de fabrication
			ES Número único	No. de serie
			3	4
			month/year of manufacture	model
			měsíc/rok výroby	vzor
			produktion monat/jahr	Model
			mois/année de fabrication	le modèle
			mes/año de producción	modelo
			5	6
			size	size
			velikost	Größe
			taille	taille
			7	8
			conformity marking / no. of notified body shell carrying out conformity with type I značka shody / číslo oznámeného subjektu, který provádí shodu s typem I die Konformität Markierung / nummer die notifierte Stelle durchführen die entsprechenden Konformität mit type I la marque de confirmit / numero d'organisme notifie effectuer la conformité avec type I marca de conformidad / numero del organismo notificado efectuará la conformidad con typo	8
			6	7
			EN 361:02	EN 358:99
			7	8
			CE 1019	
			6	7
			europaean standard	evropská norma
			Europäische Norm	La norme européenne
			Normativa europea	

8 viz návod k použití | read instructions for use | Gebrauchsanweisung beachten | Consulter les instructions d'utilisation | Consulte las instrucciones de uso

